



# AV1111 WE

## WHY RAMEX HOSE REELS › PERCHÈ UN AVVOLGITUBO RAMEX

■ SAVE TIME	■ RISPARMIO DI TEMPO
■ SAVE MONEY	■ RISPARMIO DI DENARO
■ INCREASED SAFETY	■ SICUREZZA SUL LAVORO
■ LONG HOSE DURABILITY	■ INCREMENTA LA DURATA DEL TUBO
■ EFFICIENCY IN DAILY WORK	■ EFFICIENZA NEL LAVORO QUOTIDIANO
■ 100% MADE IN ITALY	■ MADE IN ITALY 100%

## WHERE TO USE › DOVE UTILIZZARLO



## PROPER USE › CORRETTO UTILIZZO



1



2



3



4



5



6

video





# AV1111 WE

## TECHNICAL FEATURES › CARATTERISTICHE TECNICHE

### AV1111 WE AISI 304

<b>Admitted diameters</b> Diametri ammessi	5/16" (8+8)
<b>Hose lenght in meters</b> Lunghezza tubo	Up to 20 mt 5/16" Fino a 20 mt 5/16"
<b>Working pressure</b> Pressione lavoro	Up to 20 bar / Fino a 20 bar
<b>Working Temperature</b> Temperatura lavoro	80° C
<b>Inlet thread size</b> Connessione Ingresso	3/8"
<b>Outlet thread size</b> Connessione uscita	3/8"
<b>Weight</b> Peso	18 kg
<b>Packing size</b> Dimensione imballo	280x610x540 mm
<b>Raw material sides and roll</b> Materiali costruttivi rullo e fiancate	Carbon Steel Acciaio al carbonio
<b>Raw material shaft and swivel joint</b> Materiali costruttivi perno e giunto	Brass Ottone
<b>Raw material main spring</b> Materiale molla principale	Carbon Steel Acciaio al carbonio
<b>Can be used to transfer</b> Adatto all'utilizzo con	Oxygen + acetylene Ossigeno + acetilene
<b>Included Accessories</b> Accessori inclusi	Hose bumper Tampone finecorsa

### AV1111 WE FE

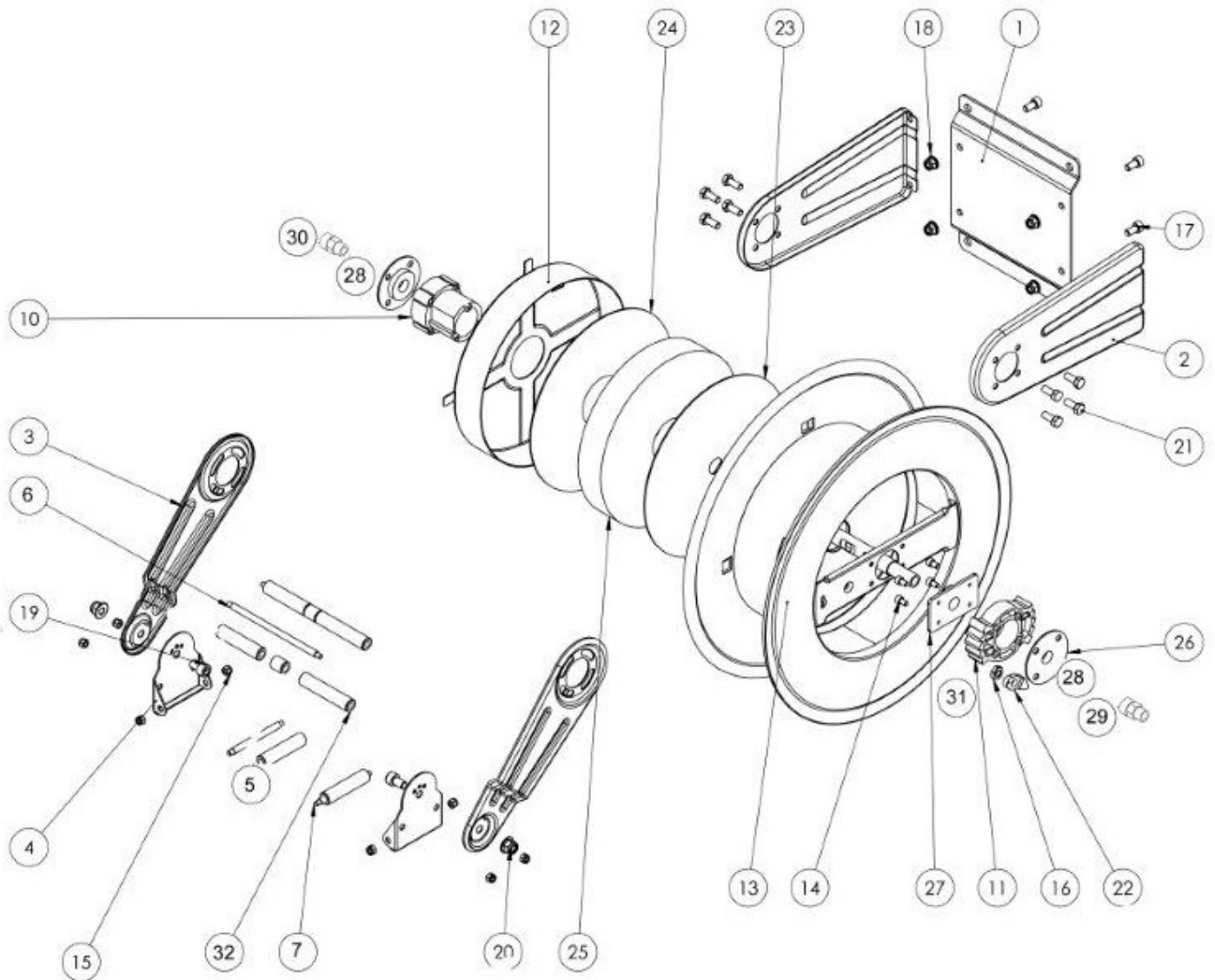
<b>Admitted diameters</b> Diametri ammessi	5/16" (8+8)
<b>Hose lenght in meters</b> Lunghezza tubo	Up to 20 mt 5/16" Fino a 20 mt 5/16"
<b>Working pressure</b> Pressione lavoro	Up to 20 bar / Fino a 20 bar
<b>Working Temperature</b> Temperatura lavoro	80° C
<b>Inlet thread size</b> Connessione Ingresso	3/8"
<b>Outlet thread size</b> Connessione uscita	3/8"
<b>Weight</b> Peso	18 kg
<b>Packing size</b> Dimensione imballo	280x610x540 mm
<b>Raw material sides and roll</b> Materiali costruttivi rullo e fiancate	Carbon Steel Acciaio al carbonio
<b>Raw material shaft and swivel joint</b> Materiali costruttivi perno e giunto	Brass Ottone
<b>Raw material main spring</b> Materiale molla principale	Carbon Steel Acciaio al carbonio
<b>Can be used to transfer</b> Adatto all'utilizzo con	Oxygen + acetylene Ossigeno + acetilene
<b>Included Accessories</b> Accessori inclusi	Hose bumper Tampone finecorsa

ramex



# AV1111 WE

EXPLODED VIEW › ESPLOSO





# AV1111 WE

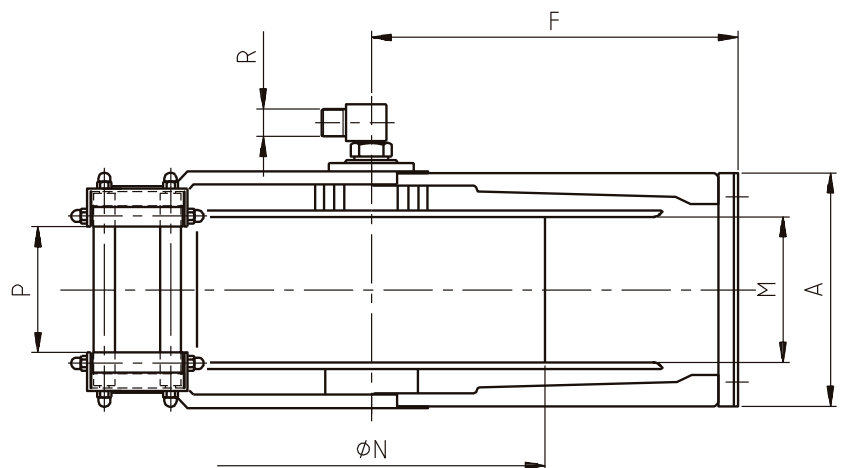
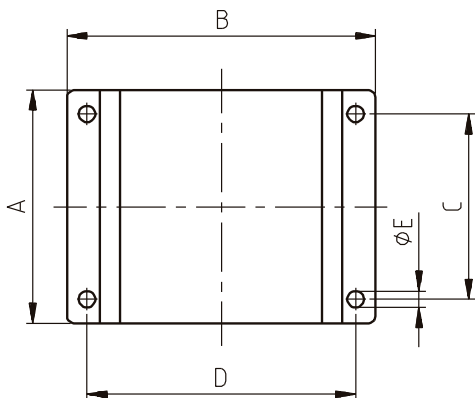
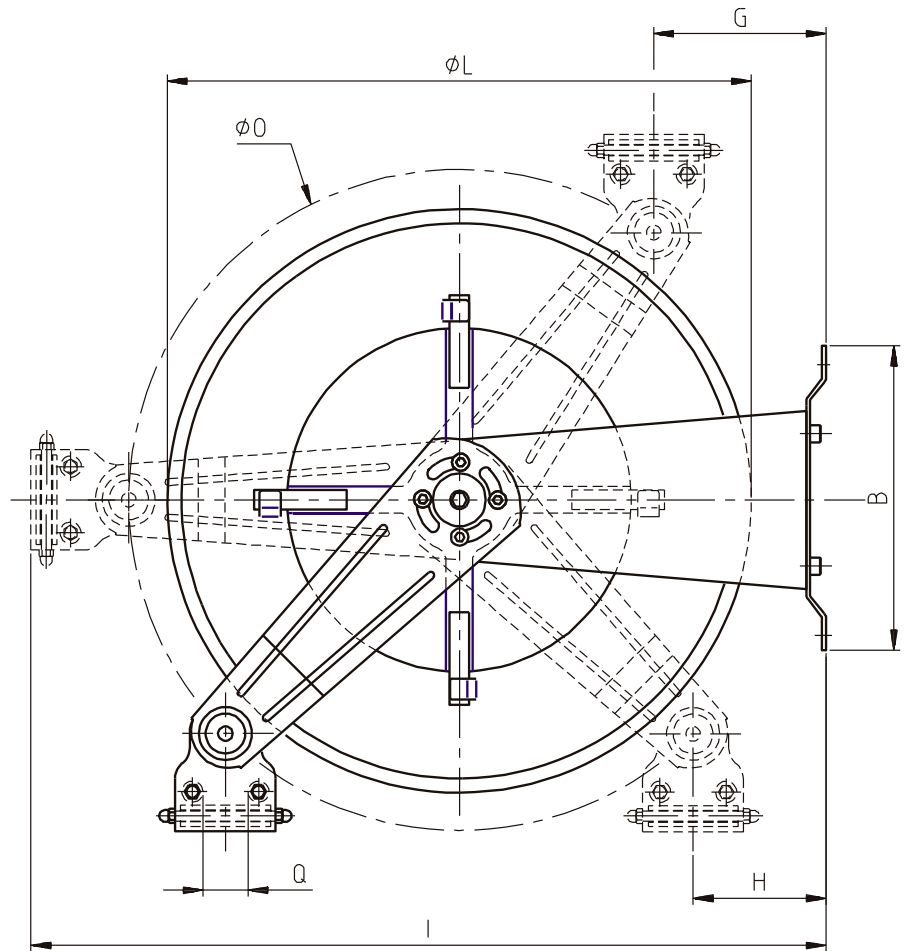
**EXPLODED VIEW / ESPLOSO**

POS	Description and quantity / Descrizione e quantità	AV 1111 WE		AV 1111 WE FE CA	
1	Base (1x)				
2	Side fixed arm / Fiancata fissa (2x)				
3	Mobile arm / Fiancata mobile (2x)				
4	Roller guide / Guida rullino (2x)				
5	Vertical roller / Rullino verticale (2x)				
6	Horizontal rod / Tirante orizzontale (2x)				
7	Vertical rod / Tirante verticale (2x)				
10	Plastic hub / Perno in plastica (1x)	KIT 92 WE		KIT 92 WE	
12	Spring case / Padellotto portamolla (1x)				
23	Plastic separator / Distanziale in plastica (1x)				
24	Plastic separator / Distanziale in plastica (1x)				
25	Main spring / Molla principale (1x)				
11	Plastic rack / Cremagliera in plastica (1x)	KIT CR 1		KIT CR 1	
13	Reel / Bobina (1x)				
22	Plastic ratchet / Salterello in plastica nudo (1x)	KIT 93		RC 10	
16	Ratchet screw + nut M10 / Vite per salterello + dado M10 (1x)			RC 20	
31	Ratchet spring / Molla per salterello (1x)			KIT 12	
14	Screw / Vite (4x)				
15	Nut / Dado (8x)				
17	Screw / Vite (4x)				
18	Nut / Dado (4x)				
19	Screw / Vite (2x)				
20	Nut / Dado (2x)				
21	Screw / Vite (8x)				
26	Support / Supporto (2x)				
27	Support / Supporto (1x)				
28	Washer / Rondella (2x)				
29	Oxygen Swivel joint / Giunto girevole - Ossigeno (1x)	4991		4991	
30	Gas Swivel joint / Giunto girevole - Benzina (1x)	4992		4992	
32	Horizontal roller / Rullino orizzontale (2x)				



# AV1111 WE

**DIMENSIONAL DRAWING › DISEGNO DIMENSIONALE**






ART.	A	B	C	D	E	F	G	H	I	L	M	N	O	P	Q
AV 1111 WE	210 mm	235 mm	180 mm	204 mm	13 mm	262 mm	50 mm	50 mm	560 mm	430 mm	145 mm	260 mm	460 mm	120 mm	40 mm




# AV1111 WE

## INCLUDED ACCESSORIES › ACCESSORI INCLUSI

HOSE REEL AVVOLGITUBO	HOSE BUMPER TAMPONE	SWIVEL JOINT GIUNTO GIREVOLE	
AV 1111 WE		4991	
AV 1111 WE FE		4992	

## OPTIONAL ACCESSORIES › ACCESSORI OPTIONAL

HOSE TUBO
66 5/16" 

 <http://ramex.com.ru> 8 (800) 707-66-48

 [ramex@ramex.com.ru](mailto:ramex@ramex.com.ru) +7 (495) 540-45-68